



St. Marys Close

Briton Ferry, Neath, SA11 2JU

£230,000



3



2



1



C

St. Marys Close

Briton Ferry, Neath, SA11 2JU

Located in the area of St. Marys Close, Briton Ferry, this delightful three-bedroom detached house offers a perfect blend of comfort and modern living. Upon entering, you are greeted by a spacious open-plan living area that seamlessly connects the living space to the kitchen area and conservatory, creating an inviting space ideal for both relaxation and entertaining.

The property has 3 bedrooms, including an en-suite shower room in the main bedroom. The additional two bedrooms are versatile and can easily accommodate family, guests or even serve as a home office.

The garden is a lovely feature, providing a relaxing outdoor space to enjoy throughout the day. With ample room for gardening, it is a true asset to the home.

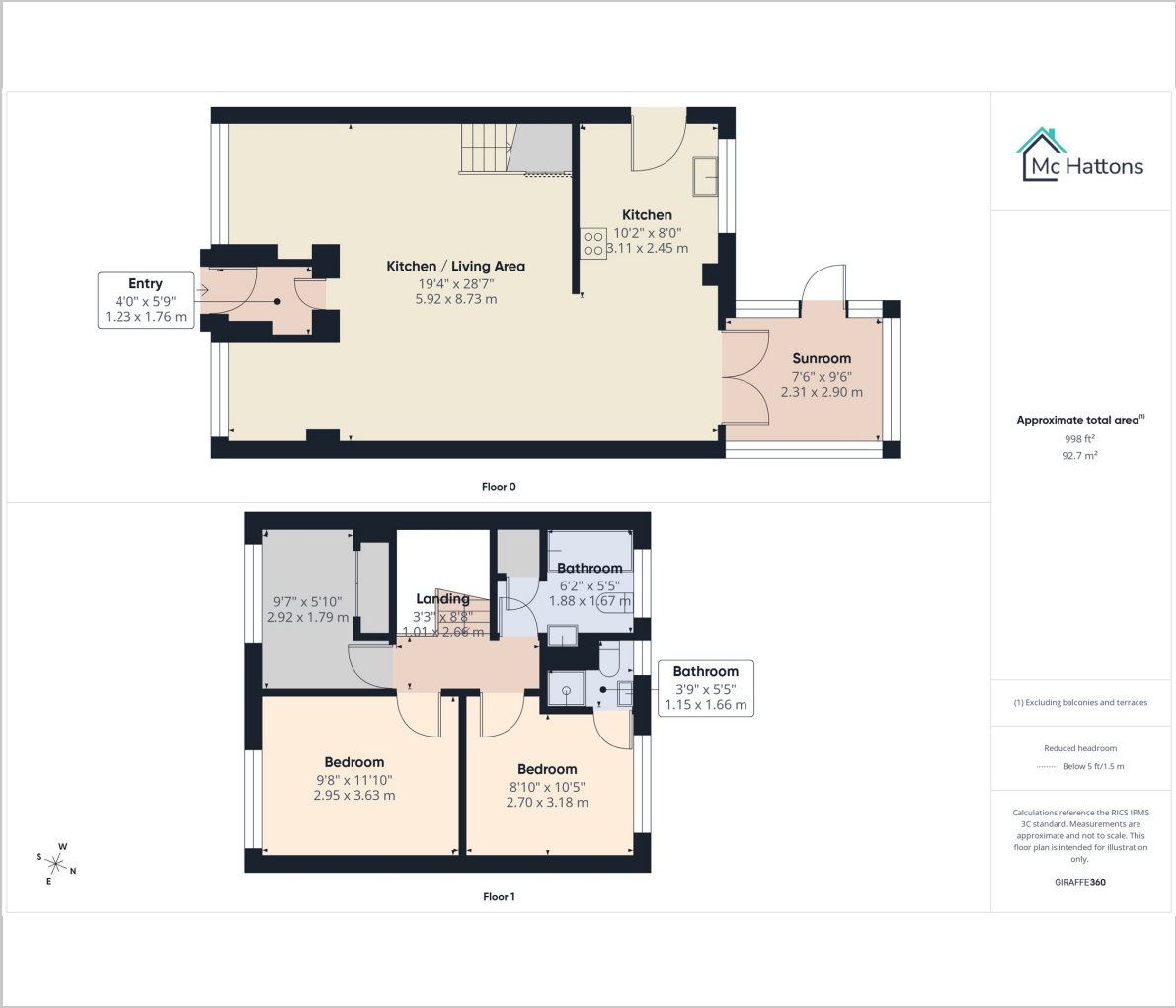
Furthermore, the property includes a private driveway, offering off-street parking for your convenience.

Located in the desirable Briton Ferry area, you will find yourself within easy reach of local amenities, schools and transport links, making it an ideal choice for families and professionals alike. This property is a wonderful opportunity for those seeking a comfortable and stylish home in a friendly community.





Floor Plan



Viewing

Please contact our McHattons - Neath Office on 01639 501766 if you wish to arrange a viewing appointment for this property or require further information.

These particulars, whilst believed to be accurate are set out as a general outline only for guidance and do not constitute any part of an offer or contract. Intending purchasers should not rely on them as statements of representation of fact, but must satisfy themselves by inspection or otherwise as to their accuracy. No person in this firms employment has the authority to make or give any representation or warranty in respect of the property.

40 Alfred Street, Neath, SA11 1EH
Tel: 01639 501766 Email: neath@mchattons.co.uk

Area Map



Energy Efficiency Graph

